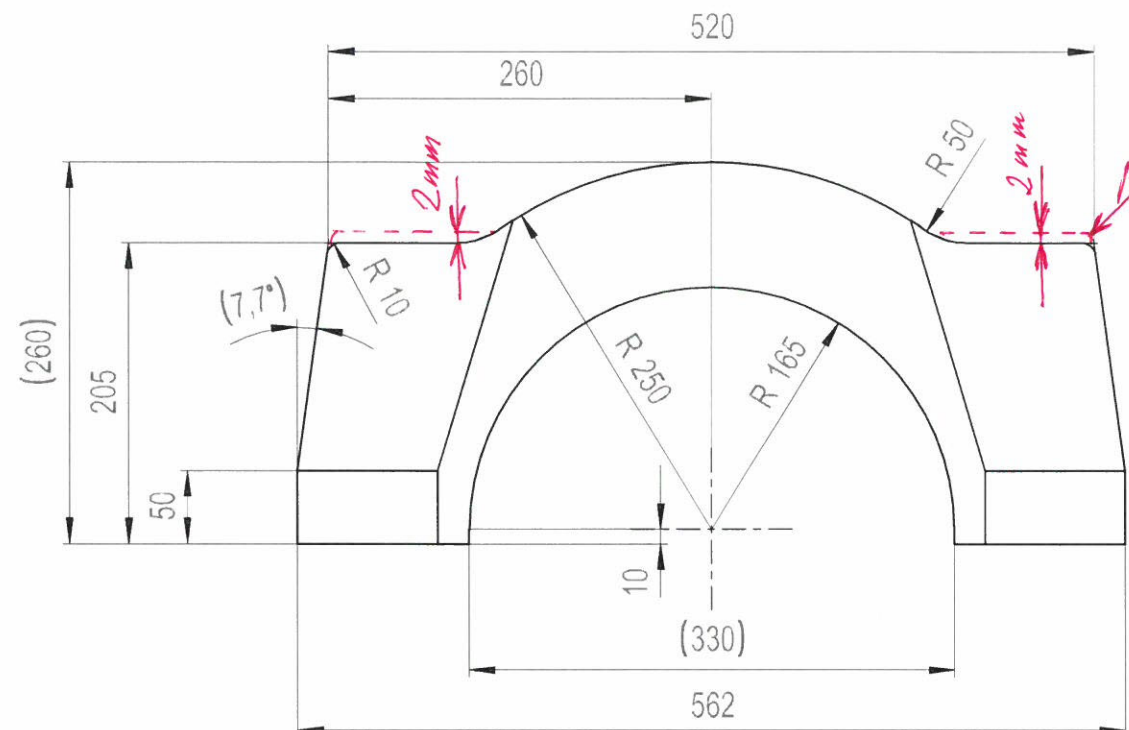
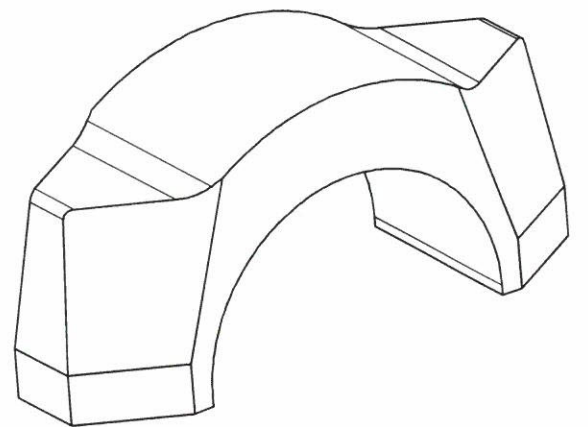
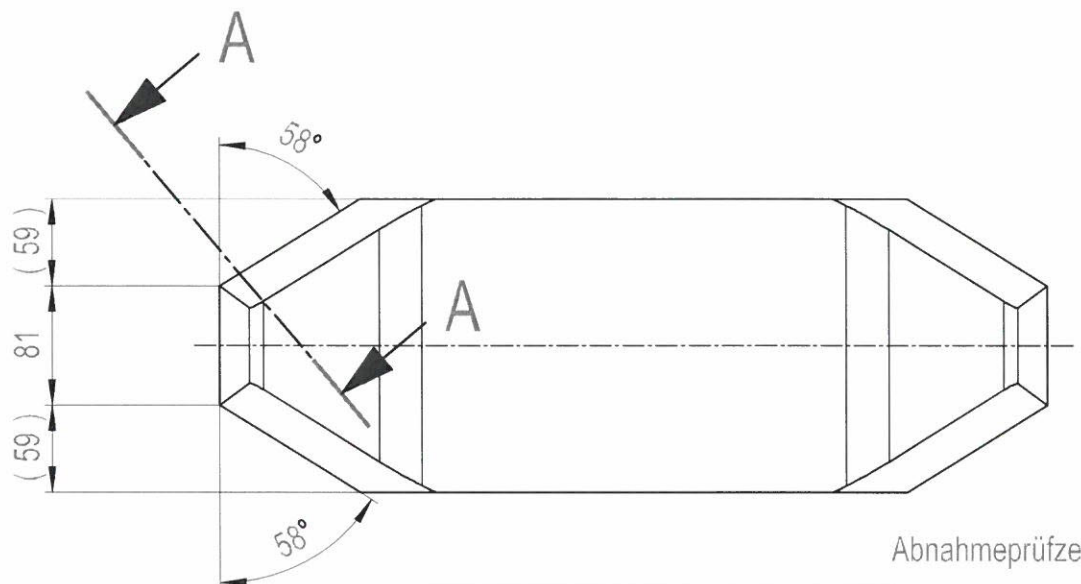
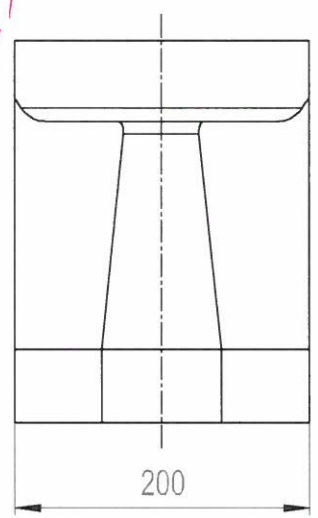


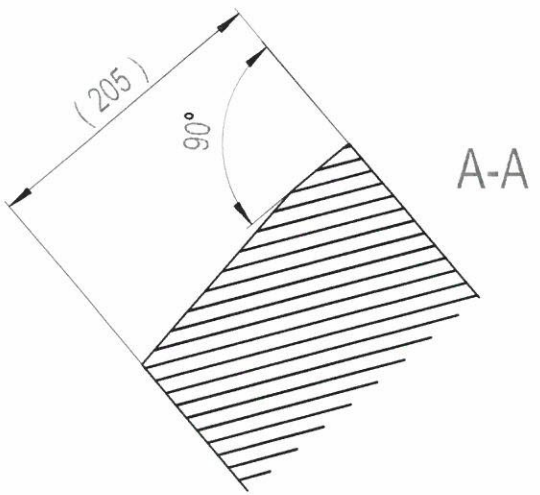
- Weitergabe sowie Vervielfältigung dieses Dokuments, Verwertung und Mitteilung seines Inhalts sind verboten, soweit nicht ausdrücklich gestattet. Zuwiderhandlungen verpflichten zu Schadenersatz. Alle Rechte für den Fall der Patent-, Gebrauchsmuster- oder Geschmacksmusterertragung vorbehalten.
- The reproduction, distribution and utilization of this document as well as the communication of its contents to others without express authorization is prohibited. Offenders will be held liable for the payment of damages. All rights reserved in the event of the grant of a patent, utility model or design.



prídavok na obrábenní



Abnahmeprüfzeugniss nach EN 10204-3.1 ist vorzulegen.



A-A

VÝKRES JE UČĚN
PRO NÁKUP VÝPALKU
Material:
Plech P 200, S355J2+N
EN 10029

| | | | | | | | | |
|--|--|--------------------------------|--|--------------------------------------|--|--|--|--|
| B100/ = √ Ohne Beschichtung KWN 2186915 | | Alternative Part No 2706865 | | Rev-No 00 | | DE Lagerschale oben Rohteil STR95 UNL EN Bearing housing top raw part STR95 UNL | | |
| REFER TO PROTECTION NOTICE ISO 16016 | | MATERIAL ECN-NO. 62259 | | MAT-SPEC. | | TYPE DOCUMENT-NO. VERS. STATUS UGD 4468727 02 SF | | |
| HSTG | | DRAWING BY | | APPROVED BY | | LAST MODIFIED BY | | |
| ISO 8015 | | ISO 14405 | | DATE 18.06.2012 | | 26.11.2018 26.11.2018 | | |
| ISO 2768 | | m/K | | NAME RUDOLPHL | | KAZMAIERB KAZMAIERB | | |
| ISO 13920 | | BF | | DESCRIPTION | | WEIGHT 95,9 KG | | |
| ISO 8062 | | CT10 | | Lagerschale oben Rohteil Gestell LAK | | SCALE 1:5 | | |
| ISO 9013 | | 231 | | Bearing housing top raw part LAK | | FORMAT A3 | | |
| ISO 1101 | | EN ISO 1302 | | PART NO. | | REV.NO. | | |
| ISO 1101 | | EN ISO 1302 | | 2282248 | | 02 | | |
| ISO 1101 | | EN ISO 1302 | | KWN 2188113 | | 1 / 1 | | |